

THE SUTTON HISTORICAL SOCIETY

SUTTON, MASSACHUSETTS

— BULLETIN —

VOL - XIII NO. 1 APRIL 1987



STAFF

Editor - Malcolm Pearson
Assoc. Editor - Myra Pearson
Art Consultant - Joy Linder
Reporters - Rae Johnson (West Sutton)
- Donald King (Manchaug)
- Evelyn Smith (Wilkinsonville)
Distribution - Donald King
Circulation - Elizabeth King
- M/M Francis King
- Marjorie Johnson
- Margaret Ritchie

MUSEUM REPORT

SPECIAL TOWN MEETING, SEPTEMBER 11, 1986,
ARTICLE- 1 *"To see if the Town will vote to authorize the Sutton Historical Commission to supervise the use of the Rufus Putnam Building, with expenses related to the improvement and maintenance of the building to be borne by the Historical Society, or act or do anything in relation thereto."* - Voted affirmatively.

A BRIEF HISTORY OF RUFUS PUTNAM HALL

The Olive Branch Lodge of Master Masons moved from the Samuel Waters Tavern in West Sutton to the Jacob March Hall in Sutton Center about 1822 and decided to build a new Masonic Hall. This building, later known as the Rufus Putnam Hall, was probably completed in 1823 at a cost of \$714.92. This Lodge occupied their new quarters on January 1, 1824 where they stayed until moving to Wilkinsonville in 1844. Between 1851 and 1910 the building probably functioned partially as a school.

In 1872/3 the upper floor became the High School and the lower room for eight grades of the Elementary school. The first high school students of five graduated in 1876. When a new school on Singletary Avenue was built in 1908, the Rufus Putnam School was discontinued.

At a Town Meeting, March 1910, the building was leased to the newly organized Daughters of the American Revolution. But in 1934 school attendance necessitated resumption of the building as a school facility.

Again in the early 1950's the building served for school classes until the present high school was constructed. The library moved from the old Town Hall to the lower floor of the Rufus Putnam Hall and remained there until moving into the new quarters in the new Municipal Center in 1983. Rufus Putnam Hall remained empty until 1986 when the Town authorized its usage by the Historical Society.

ESTABLISHING THE MUSEUM

During August and September, 1986 activity had been intense to prepare a presentable museum for participation in the Blackstone Valley Heritage Homecoming weekend of October 4, and 5.



GENERAL RUFUS PUTNAM HALL
PHOTO CIRCA 1900

*Records of building the Masonic Hall in Sutton
 as a plan by the committee Jan 1826
 To pay Phineas Bathell for
 better Underpinning &c 56
 To for stones under the hearth 1 25
 " Dan Harrington for frame and
 finishing outside 240 --
 " paying Mr. Hanning for Advertising 1 25
 " paying Luke Harrington for finish-
 ing Hall &c 310 --
 " paying J. Giggis for a pair of hinges
 for better door 1 --
 " Built on the above after due to Jan 1826 6 54
 " paid D. Conroy for Chair & baritone 8 88*

FACSIMILE OF MASONIC LODGE ACCOUNT BOOK 1826 OF THE PRESENT GENERAL RUFUS PUTNAM HALL



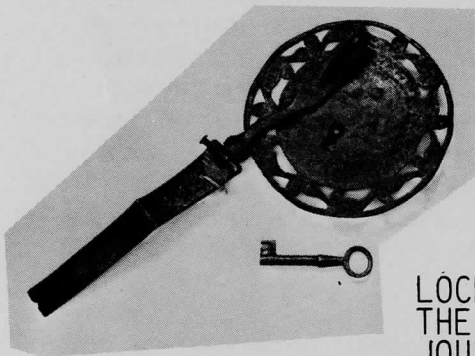
OVERALL VIEW



DRY SINK CONSTRUCTED IN SUTTON WITH WIDE CHERRY BOARDS THAT ARE SOLID WITH NO SPLICING IN THEIR WIDTH DIMENSION



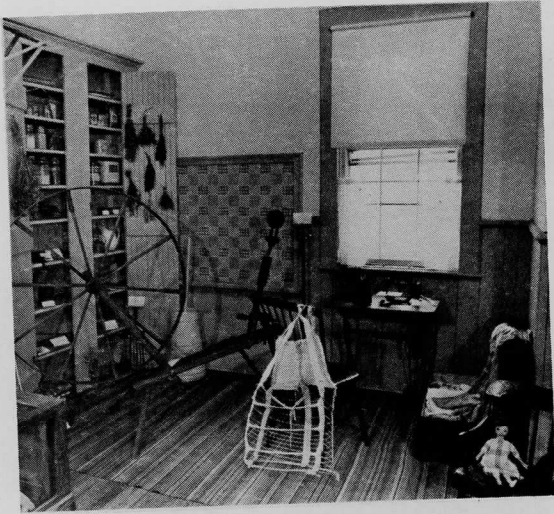
MANCHAUG GRAMMAR SCHOOL BELL



LOCK AND CLASP FROM THE CHURCH OF GOOD JOURNEY BUILT BY CORTEZ 1519, VERA CRUZ, MEXICO



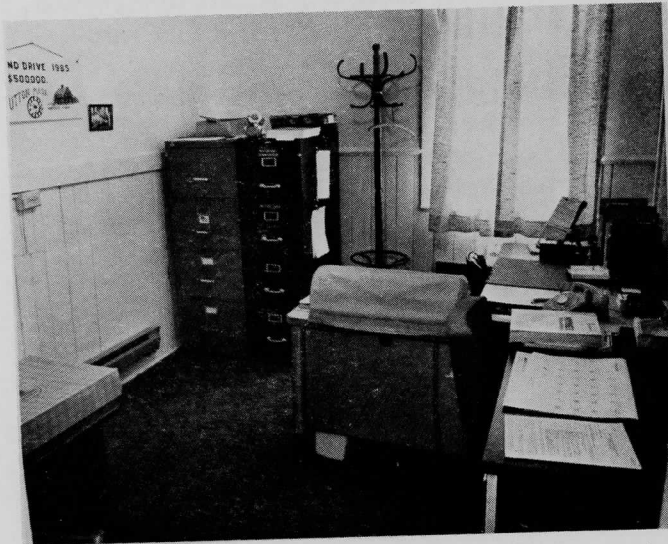
ORIGINAL SCHOOL DESKS USED IN THIS BUILDING (GENERAL RUFUS PUTNAM HALL)



KEEPING ROOM



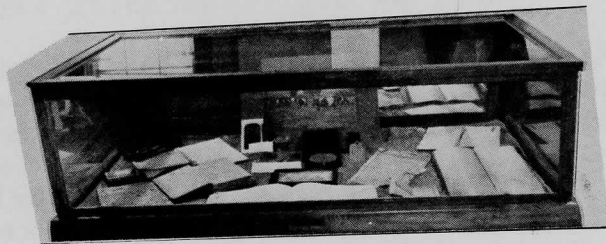
TYPICAL FRONT PARLOR OF
THE 1880-1890 era



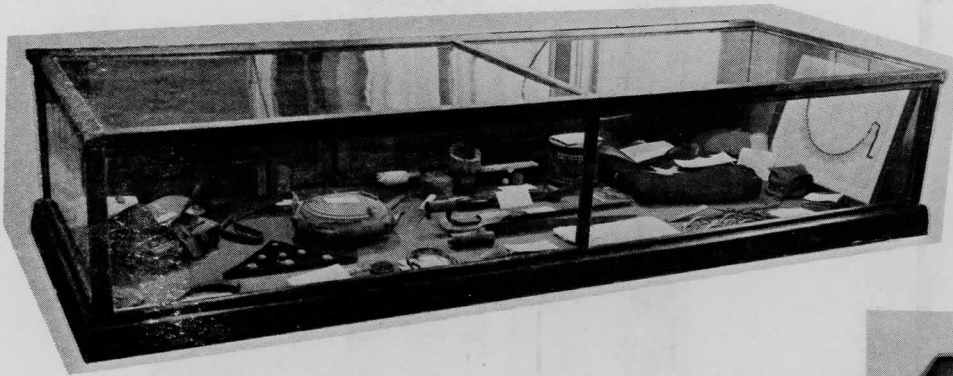
NEW OFFICE AREA SHARED BY:
SUTTON HISTORICAL SOCIETY,
HISTORICAL COMMISSION, AND
THE WATERS FARM PRESERVATION
GROUP



BURDETT FOOT PUMPED
PARLOR ORGAN

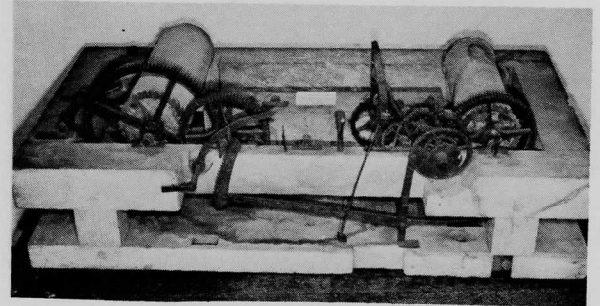


DISPLAY CASE



CIVIL WAR DISPLAY CASE

CLOCKWORKS 1796- A GIFT BY
GARDNER WATERS TO THE FIRST
CONGREGATIONAL CHURCH



An energetic work group recruited from the personnel of the Historical Society invaded the old library floor of the building and with determination to complete its mission prior to the October 4 date did accomplish its task on time. First, the old bookshelves were dismantled and the wood salvaged, next, the floor oxalic acid washed and varnished, then the walls scrubbed and painted, windows cleaned, and finally arrangement of displays.

During this period an office area 10' x 12' had been built in the corner, well insulated and a strip electric heater to keep the office warm in winter months. The Historical Society, the Historical Commissioner, and the Waters Farm Preservation Group share in a joint headquarters (phone 865-2010) and mailing address. Mary Arakelian is usually in the office on Thursday from 9:AM to 4:PM. She has efficiently set-up files and established an office routine.

Several projects must be completed before the building may be considered operational. The former DAR hall ceiling on the second floor required repairing of two large holes and painting [this is being done presently, the week of March 30 and April 3]. The old heating system completely replaced with forced hotair, the basement cleared of old toilets and material, porch roof supports reestablished on a new floor and the outside painted. All these projects will follow at the earliest possible date on a progressive schedule.

The Daughters of the American Revolution held meetings in the upper hall for a period of time but in recent years the location became impractical for their function. The DAR graciously relinquished to the Historical Society their collection of heirlooms and artifacts. These items are now an important part of the Museum collection.

A COMMENTARY ON OUR PROGRESSIVE PROGRAMING

Information from the YANKEE magazine, March 1987 issue, section on "Small Business and Crafts"; i.e., wool growers cooperative board.

Virgina Easterbrooks of Dudley, appeared on our program to discuss sheep raising and wool marketing. Strickland Wheelock whose family for generations have been active in the Stanley Woolen Mills, spoke on a Society program. The Society toured the mill one meeting night and saw wool from the cooperative being processed into blankets. William King of Sutton is president of the board and raises sheep.

A BULLETIN TRAVEL SAGA

By- Malcolm Pearson

The Epigraphic Society Occasional Publications
Volume 13 No. 313 August 1985

Reprinted by permission of the Sutton Historical Society

THE SUTTON HISTORICAL SOCIETY SUTTON, MASSACHUSETTS



— BULLETIN —
VOL. VI No. 4 December 1980

STAFF

RAE JOHNSON
DONALD KING
FRANCIS KING

MALCOLM PEARSON
MYRA PEARSON
MARGARET RITCHIE
MARY KING

Algonkian Signatures on a Treaty of A.D. 1681 - Dr. Fell's Report

FACSIMILE OF THE BULLETIN HEADING, DECEMBER 1980

This Society granted the request of Dr. Fell to reprint the article for reference material in a class he was teaching at St. Regis College. Later a reprint in the Epigraphic Society [of which the writer is a charter member] publication appeared in 1985.

The distribution of the Epigraphic Journal is literally worldwide. It is distributed to universities, libraries, and museums in the following countries: Algeria, Arabia, Australia, Austria, Bolivia, Britain, Canada, China, Columbia, Denmark, Fiji, Finland, France, Germany, Holland, Ireland, Israel, Italy, Philippines, Portugal, Scotland, South Africa, Spain, Sweden, Switzerland, and 72 institutions in the United States!

In January, Louis Buff, a teacher at the Muskawchee Cultural College in Hobbama, Alberta, Canada, wrote asking for a copy of the 1681/2 deed. This item was forwarded for instructional purposes in classes for the Algonquin-Cree Indians studying their pre-Columbian syllabaries [signatures] at the Native Heritage and Cultural Center in Edmonton, Alberta.

An article written by Dr. Barry Fell in the December 1980 issue, interpreted the Indian signatures which were inscribed on the Dudley/Stoughton 1681/2 deed with the Manchaug Indians (please refer to the article for details). Dr. Fell is a professor emeritus of Harvard University with an international reputation as an epigrapher, or one who studies inscriptions, especially of ancient writings.

DR. ANNE ANDERSON
NATIVE HERITAGE & CULTURAL CENTRE
12555 - 127 STREET
EDMONTON, AB T5L 1A4
ph. 452-6296

March 12, 1987

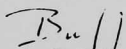
Malcolm Pearson
229 Worc.-Prov Pike
Sutton, MA 01527 USA

Dear Sir:

On behalf of Dr. Anne Anderson and her centre, the Muskawchees Cultural College, Hobbama, Alberta, the Saskatchewan Indian Federated College and all the other aboriginal organizations I work with, I extend our nanaskomwin, our gratitude and maximum respect for what you and your historical society have done to firmly establish the long pre-Columbian existence of syllabaries among the tribes of the Americas. Tonight I am giving a speech regarding this and was thus reminded of this long overdue letter acknowledging the reception of your travaha, your labourious efforts to reproduce "the evidence". Feel free to write to Dr. Fell regarding our correspondence as I know him well and he will be very pleased to learn of the progress this investigation has achieved. If there is anything I can do to assist your efforts, please notify me. You will for instance possibly benefit from the linkage I am proposing between the certain scripts of the Nipman, MicMac, Cree, Cherokee and, yes, Hopi as these scripts relate to the Hopi migration patterns. When the Windspeaker aboriginal newspaper publishes my work soon, I'll send you a copy.

Again, I cannot express the degree of gratitude we all feel for your efforts.

Sincerely,


Louis Buff Parry
#803-9940-104 St.
Edmonton, Alberta
CANADA T5k 0Z4

LETTER FROM THE NATIVE HERITAGE AND
CULTURAL CENTER, EDMONTON, ALBERTA, CA.

Apr. 1987

DO YOU JUST BELONG?

Are you an active member:
The kind who would be missed?

Or are you just contented
That your name is on the list?

Do you attend the meetings,
And mingle with the flock,

Or do you stay away
And criticize and knock?

Do you take an active part
To help the work along?

Or are you satisfied to be
The kind who just belongs?

Do you ever work on committees
To see there are no tricks?

Or leave the work to just a few
And talk about the cliques.

So come to meetings often
And help with hand and heart.

Don't be just a member
But take an active part.

Think this over, member,
You know right from wrong.

Are you an active member,
Or do you just belong?

Courtesy- Mary Arakelian

MONTHLY MEETINGS-

JANUARY - At the monthly meeting, a request was made to have an article in the Annual Town Warrant for a second Town History - now not available.

Alex Belisle, professor at Becker Junior College and Editor of the "Millbury-Sutton Chronicle" discussed the influence of the French culture as a result of the Canadian migration into New England during the nineteenth century. His knowledge and presentation was most impressive.

FEBRUARY - The Building Committee reported that a strip electric heater had been installed in the General Rufus Putnam Hall office to furnish heat during the winter season. Bud Gurney talked about visiting the Washburn-Norlans farm operated by Billy (Mrs.) Gannon having a program whereby persons may live in a nineteenth century style environment. Also, a one room school house coexists in this program. Marieta Howard presented a lecture on the art of lace making. With slides and an excellent display, the Society members were well informed.

JANUARY TO APRIL - WELCOME NEW MEMBERS

James and Alice Casey
Cynthia C. Horan

James T. Fitzpatrick, Jr.
Dr. Perry and Mrs. Nola Schenk

IN MEMORIAM -

*Ernest Chase *Anfon Davis *Beatrice E. Paine

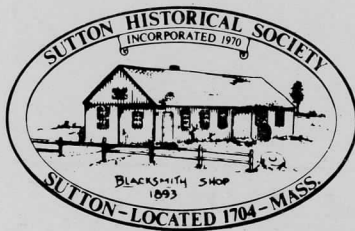
OF INTEREST-

An anonymous donor presented the Society with five hundred dollars toward restoration of the General Rufus Putnam Hall Museum.

Marieta Howard arranged an attractive lace display in the Lobby showcases at the Municipal Center recently.

The Blacksmith Shop appears on the Sutton Annual Town Report Cover for 1987. It is a shaded line drawing by member Linda Sinicola

From



Box 127

Manchaug, MA 01526

Non-Profit Organization
U. S. Postage
PAID
Manchaug, MA 01526
Permit No. 1